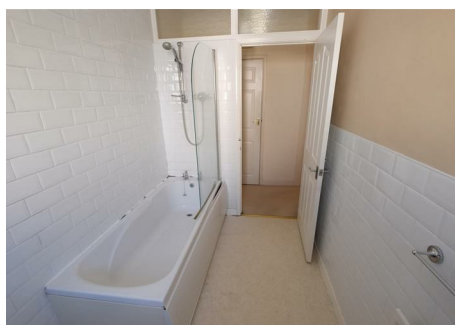
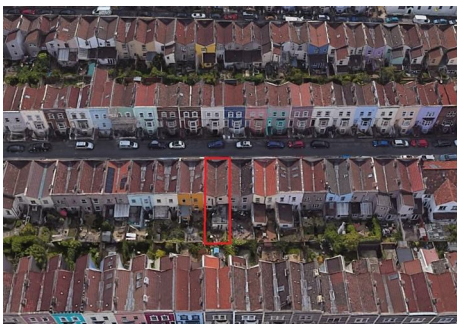




0117 973 6565  
www.hollismorgan.co.uk  
post@hollismorgan.co.uk

hollis  
morgan  
auction



## 23 William Street, Totterdown, Bristol, BS3 4TT

Auction Guide Price £276,000 +++

Hollis Morgan - OCTOBER LIVE ONLINE AUCTION - A Freehold terraced HOUSE ( 1040 Sq Ft ) in need of BASIC UPDATING with enclosed rear GARDEN in this Sought after LOCATION.

## ADDRESS

23 William Street, Totterdown, Bristol BS3 4TT

## FOR SALE BY LIVE ONLINE AUCTION

\*\*\* SOLD BY LIVE ONLINE AUCTION \*\*\*

GUIDE £235,000 +++

SOLD @ £276,000

Lot Number 5

The Live Online Auction is on Wednesday 14th October at 18:00

Registration Deadline is Monday 12th October

The sale will be streamlined LIVE ONLINE and you can BID by telephone, proxy or via your computer with your unique bidding PIN.

Registration is a simple 3 step process – download the online auction buyers guide for further details

Or simply email [bid@hollismorgan.co.uk](mailto:bid@hollismorgan.co.uk)

## PRE AUCTION OFFERS

On this occasion the vendor will NOT be considering any pre auction offers.

## EXTENDED COMPLETION

Completion is set for 6 weeks or earlier subject to mutual consent.

## VIEWINGS

Viewings can be booked on specific days for this property – please submit a viewing request online and we will contact you to arrange access.

Hollis Morgan would be grateful if you could arrive promptly to inspect the properties at the START of the agreed time as we have scheduled viewings throughout the day and CANNOT wait for late arrivals.

There are likely to be viewings on the property before and after your appointment and if you miss your slot ( usually 15 minutes or longer for larger properties ) you will be asked to wait until the next available time.

Please note government regulation on groups sizes and safe social distancing must be practiced at all times – please bring your own gloves and facemask.

You may be asked to wait outside before it is safe to enter – please understand and respect this request.

If you have shown any symptoms of Covid (19) in the last 10 days we would respectfully ask you to not attend the viewing.

The safety of our clients and staff is our number one priority and we thank you for your understanding.

Please note that hard copy of details will not be provided but will have been emailed to you with instructions on how to bid and what happens next before the viewing.

## SOLICITORS

Tom Bowering

Wards - Henleaze Office

t: 0117 428 1999

e: [tom.bowering@wards.uk.com](mailto:tom.bowering@wards.uk.com)

## ONLINE LEGAL PACKS

\*\* LEGAL PACK COMPLETE\*\*

Digital Copies of the Online legal pack can be downloaded Free of Charge.

Please visit the Hollis Morgan Website and select the chosen lot from our Current Auction List.

Follow the RED link to "Download Legal Packs" For the first visit you will be required to register simply with your email and a password.

Having set up your account you can download legal packs or if they are not yet available they will automatically be sent to you when we receive them.

You will be automatically updated by email if any new information is added.

There will be a note added to the list to confirm AUCTION PACK NOW COMPLETE when no further information is due to be added.

\*\*\* STAY UPDATED \*\*\* By registering for the legal pack we can ensure you are kept updated on any changes to this Lot in the build up to the sale.

## THE PROPERTY

A Freehold period mid terraced property ( 1040 Sq Ft ) with accommodation arranged over two floors and an enclosed rear garden.

The property has been extended to the rear and has recently had extensive remedial works on the exterior of the building and new windows fitted on the front upper floor - please refer to legal pack for receipts and details of works.

Sold with vacant possession.

## LOCATION

The property is located within the popular suburb of Totterdown with excellent local amenities and services are all within close proximity including independent retailers, pubs, bars, cafes and restaurants. Temple Meads and the City Centre are both within walking distance.

## THE OPPORTUNITY

REQUIRES UPDATING

The property now requires basic updating but would make a fine family home in this sought after location.

## EXTENSION / ATTIC CONVERSION

There is scope for an attic conversion and to rearrange the existing ground floor extension.

( Subject to consents )

## HMO / STUDENT LET

Potential for 4 + Tenants.

## RENTAL APPRAISAL

What rent can we achieve for you?

The Bristol Residential Letting Co. are confident this property would make a good rental investment. Josh Box of The Bristol Residential Letting Co suggest a rent in the region of;

2 bedroom house - £1100pcm - £1200pcm

If you would like to discuss more detail on the potential for rental, you can call me (0117 370 8818) or email ([josh@bristolreslet.com](mailto:josh@bristolreslet.com)) for a no obligation discussion. Alternatively why not drop into my Office (222 North Street, Southville, BS3 1JD) where I am always happy to advise investors on maximising their investment.

I will look forward to hearing from you and helping you with your investment.

## EPC

For full details of the EPC please refer to the online legal pack.

## BUYER'S PREMIUM

Please be aware all purchasers are subject to a £1000 + VAT (£1,200 inc VAT) buyer's premium which is ALWAYS payable upon exchange of contracts whether the sale is concluded before, during or after the auction date.

## GUIDE PRICE

An indication of the seller's current minimum acceptable price at auction. The guide price or range of guide prices is given to assist consumers in deciding whether or not to pursue a purchase. It is usual, but not always the case, that a provisional reserve range is agreed between the seller and the auctioneer at the start of marketing. As the reserve is not fixed at this stage and can be adjusted by the seller at any time up to the day of the auction in the light of interest shown during the marketing period, a guide price is issued. This guide price can be shown in the form of a minimum and maximum price range within which an acceptable sale price (reserve) would fall, or as a single price figure within 10% of which the minimum acceptable price (reserve) would fall. A guide price is different to a reserve price (see separate definition). Both the guide price and the reserve price can be subject to change up to and including the day of the auction.

## RESERVE PRICE

The seller's minimum acceptable price at auction and the figure below which the auctioneer cannot sell. The

reserve price is not disclosed and remains confidential between the seller and the auctioneer. Both the guide price and the reserve price can be subject to change up to and including the day of the auction.

## SURVEYS AND VALUATIONS

If you would like to arrange a survey or mortgage valuation of this Lot BEFORE the auction please instruct your appointed surveyor to contact Hollis Morgan and we will arrange access for them to inspect the property. Please note that buyers CANNOT attend the surveys and the surveyors are responsible for collecting and returning keys to the Hollis Morgan offices in Clifton.

## TESTIMONIALS

We are very proud of what our past clients have say about us - please visit the Hollis Morgan website to read their testimonials.

## CHARITY OF THE YEAR

Hollis Morgan are supporting Bristol Charity All Aboard Watersports as our 2020 Charity of the year with 5% of each Buyers premium being donated.

All Aboard Watersports strive to make it possible for everyone in the local community to join in a range of watersports and water related activities for people with physical, emotional or cognitive disabilities in the historic Bristol City Docks - [www.allaboardwatersports.co.uk](http://www.allaboardwatersports.co.uk)

In 2019 we were delighted to have raised well £10k for Bristol Zoo by supporting their Bear Wood Project at the Wild Place through events including the Hollis Morgan Opera Picnic and hosting their annual Gala Evening. Visit the Hollis Morgan Charity page of our Website for further details - [www.hollismorgan.co.uk/charity](http://www.hollismorgan.co.uk/charity)

## WHY HOLLIS MORGAN?

Hollis Morgan hold the largest land & property auctions in the region.

Hollis Morgan sold more £££'s of Land & Property in both 2018 & 2019 than any other auctioneer in the region.

In fact, no auctioneer has sold more than Hollis Morgan since 2010 with over £289m of sales - £95m more than anyone else.

\*Source EIG – Sales in BS and GL postcodes by agents based in BS or GL postcodes.

Hollis Morgan was the most successful Auctioneer in Bristol & North Somerset during 2018 – 2019 with an 87 % success rate.

\*Source EIG – Sales in BS postcodes 2018 & 2019 by agents based in BS

## AUCTION PROPERTY DETAILS DISCLAIMER

Hollis Morgan endeavour to make our sales details clear, accurate and reliable in line with the Consumer

Protection from Unfair Trading Regulations 2008 but they should not be relied on as statements or representations of fact and they do not constitute any part of an offer or contract. All Hollis Morgan references to planning, tenants, boundaries, potential development, tenure etc is to be superseded by the information contained in the legal pack. It should not be assumed that this property has all the necessary Planning, Building Regulation or other consents. Any services, appliances and heating system(s) listed have not been checked or tested. Please note that in some instances the photographs may have been taken using a wide angle lens. The seller does not make any representation or give any warranty in relation to the property and we have no authority to do so on behalf of the seller.